



# CorePro LED tube Universal T8



## CorePro LEDtube UN 1200mm HO 18W865 T8

CorePro, LEDtube, T8, Universal, 1200 mm, 18 W, 36W TL-D, 6500 K, 2000 lm, CRI 80, 50000 hour(s)

The new Philips CorePro LEDtube Universal T8 brings simplicity to your lighting project. You don't need to pay attention to the driver technology anymore. Thanks to a unique design, Philips CorePro LEDtube Universal T8 directly fits in luminaires operating either on Electro Magnetic ballasts or HF Electronic ballasts or mains power connection. So simple to operate and no need to carry double stock of products! Perfectly safe, reliable & easy to install Philips CorePro LEDtube Universal T8 is the ideal alternative to standard fluorescent tubes to save energy and lower investment.

### Product data

General Information		Operating and Electrical	
Cap-Base	G13	Correlated Color Temperature (Nom)	6500 K
Nominal lifetime	50,000 hour(s)	Luminous Efficacy (rated) (Nom)	111 lm/W
Switching Cycle	50,000	Color Consistency	<6
Lighting Technology	LEDtube	Color rendering index (CRI)	80
Flux measurement reference	Sphere	LLMF At End Of Nominal Lifetime (Nom)	70 %
Warranty period	3 years	Photobiological safety according to EN 62471	RG0
Light Technical		Line Frequency	50 to 60 Hz
Color Code	865 [CCT of 6500K]	Input Frequency	50 to 60 Hz
Beam Angle (Nom)	240 degree(s)	Power Consumption	18 W
Luminous Flux	2,000 lm	Lamp Current (Nom)	100 mA
Color Designation	Cool Daylight	Starting Time (Nom)	0.5 s

## CorePro LED tube Universal T8

Warm-up time to 60% light	0.5 s
Power Factor (Fraction)	0.9
Voltage (Nom)	220-240 V
LED alternative to fluorescent lamp power	36W TL-D
Inrush current at mains	9.4
Max. lamp no. on MCB B type 10A – Mains	82
Max. lamp no. on MCB B type 10A – EM ballast without Compensation Capacitor.	104
Max. lamp no. on MCB B type 10A – EM ballast with Compensation Capacitor.	19
Max. lamp no. on MCB B type 16A – Mains	131
Max. lamp no. on MCB B type 16A – EM ballast without Compensation Capacitor.	166
Max. lamp no. on MCB B type 16A – EM ballast with Compensation Capacitor.	30
Ballast Compatibility	Universal

### Temperature

T-Case Maximum (Nom)	55 °C
----------------------	-------

### Controls and Dimming

Dimmable	No
----------	----

### Mechanical and Housing

Bulb Finish	Frosted
Bulb Material	Glass
Product Length	1,200 mm
Bulb Shape	T8
Net Weight (Piece)	0.215 kg

### Approval and Application

Energy Efficiency Class	E
-------------------------	---

Energy Saving Product	Yes
Approval Marks	RoHS compliance CE marking KEMA Keur certificate
Energy Consumption kWh/1000 h	18 kWh
EPREL Registration Number	1936622
CE mark	Yes
EU RoHS compliant	Yes
Flickering value (PstLM) – Flickering value as per EN 61000-3-3	1
Stroboscopic effect visibility measure (SVM)	0.4
Ambient temperature range	-20 to +45 °C

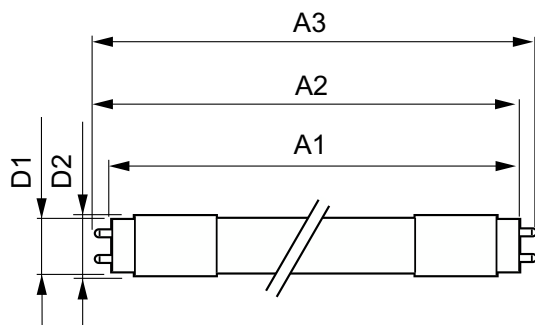
### Application Conditions

can it be used in closed luminaires	Yes
Wireless Technology	Not applicable

### Product Data

Order product name	CorePro LEDtube UN 1200mm HO 18W865 T8
Full product name	CorePro LEDtube UN 1200mm HO 18W865 T8
Full product code	871869680170300
Order code	929001869402
Material Nr. (12NC)	929001869402
Numerator - Quantity Per Pack	1
EAN/UPC - Product/Case	8718696801703
Numerator - Packs per outer box	10
EAN/UPC - Case	8718696801710

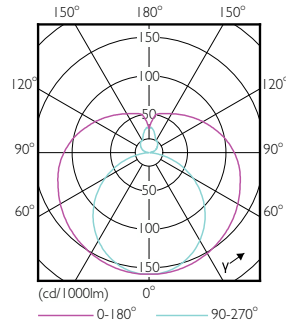
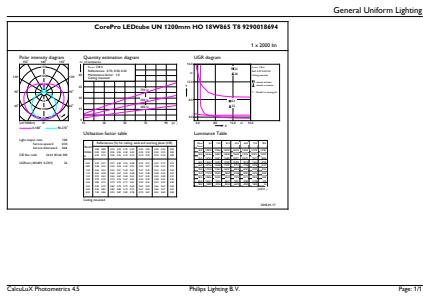
## Dimensional drawing



Product	D1	D2	A1	A2	A3
CorePro LEDtube UN 1200mm HO 18W865 T8	27.9 mm	28 mm	1,199.4 mm	1,205.3 mm	1,213.6 mm

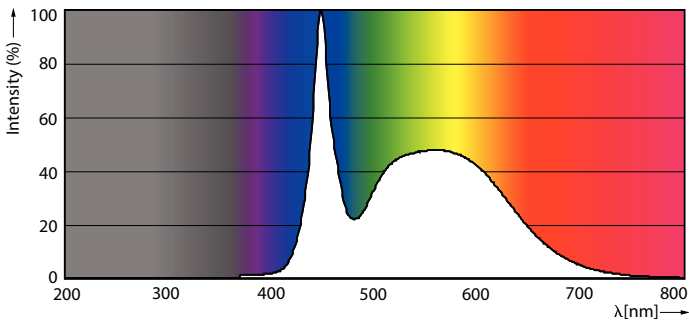
# CorePro LED tube Universal T8

## Photometric data



General uniform lighting - CorePro LEDtube UN 1200mm HO 18W865 T8

Light Distribution Diagram - CorePro LEDtube UN 1200mm HO 18W865 T8

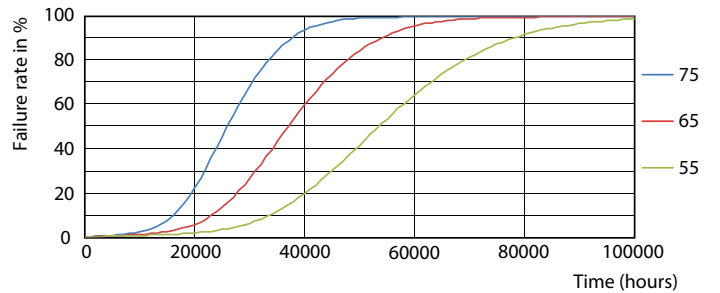


Spectral Power Distribution Colour - CorePro LEDtube UN 1200mm HO 18W865 T8

## Lifetime



Life Expectancy Diagram



FailureRate

# CorePro LED tube Universal T8

## Lifetime



Lumen Maintenance Diagram - CorePro LEDtube UN 1200mm HO 18W865 T8

Lumen Maintenance Diagram - CorePro LEDtube UN 1200mm HO 18W865 T8



LifetimeVsTc

