

Datasheet of 60W 5FT Seemless Linear Light

Product Name 60W 5FT Seemless Linear Light
 Product SKU ML-SLL-5FT-60W-4K

Product Characteristics

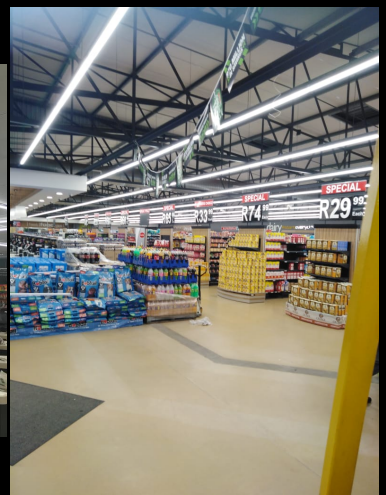
- Serves as total replacement for 2x58W T5 Linear Luminaire
- Seamless technology provides a continuous linear look
- Surface mounted (SMD) technology provides for higher lumen and uniform light output
- Specially designed Isolated External Driver technology
- Flicker free LED technology
- 5 year warranty



Application Retail, offices, commercial and industrial

Product Specification

Power	60W
Effective Lumen	10000 lm
Colour	4000K
Colour Rendering Index	RA>85
Beam Angle	130°
Driver	Isolated External Driver
Power Factor	0,95PF
Input Voltage	AC180-265V
Input Frequency	50/60HZ
Operating Temperature	0°C - 40°C
Dimmable	No
Lifespan	50,000 hours
Warranty	5 Years
Ingress Protection Rating	IP20
Surge Protection	1.0kV
Connection	Power source required for every 5 units
Main Materials	Polycarbonate exterior housing / Aluminium heat sink
Certifications	CE / ROHS
Dimension	1500mm (L) * 40mm (W) * 38mm (H) @ 0.2kg



Comments.....Project.....