



# M

**Magnet Portfolio**

---

**For fast,  
skilled support,  
choose Magnet**



**ELECTRICAL  
LIGHTING  
WATER  
SOLAR**

# INDEX

**01**

---

Who we are

**02**

---

Branches

**03**

---

Electrical

**05**

---

Lighting

**07**

---

Water

**08**

---

Solar

**09**

---

Brands

**10**

---

Customers

**11**

---

Words  
from MD

**12**

---

BEE

# ELECTRICAL SUPPLIES AND SOLUTIONS

At Magnet we specialise in Electrical, Lighting, Water and Solar supplies and solutions. We are passionate about keeping industry running efficiently.

**For fast, skilled support, choose Magnet.**



**SAME DAY  
QUOTES**

on stock items



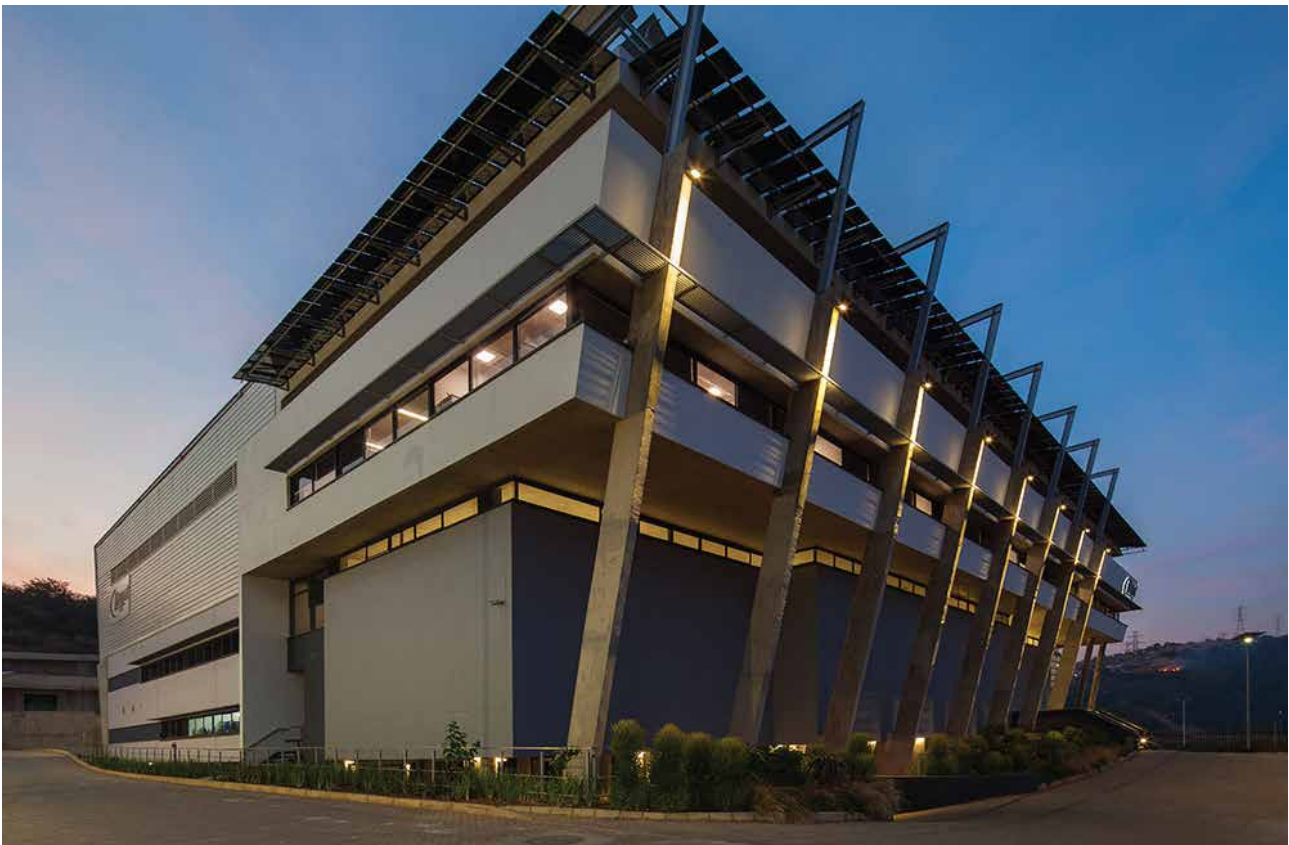
**DOOR-TO-DOOR  
DELIVERY**  
on stock items  
**IN 24 HOURS**



**24-7 BREAKDOWN  
SUPPORT WITHIN  
3 HOURS**



**TECHNICAL  
ADVICE FROM  
IN-HOUSE  
ENGINEERS**  
within 1 week



# BRANCHES

Durban (Head Office)  
Pietermaritzburg  
Richards Bay  
Johannesburg



# M



## Fast, Skilled Support on Electrical Supplies

We stock a comprehensive range of world-class products at competitive prices. We are passionate about keeping industry running efficiently.

Let us supply you with all of your electrical needs:

- > Switchgear
- > Automation
- > Mechanical
- > Contracting
- > Armature Winding
- > Power Quality & Metering
- > Lighting
- > Flameproof



# ELECTRICAL

## Engineered Solutions for all Electrical Infrastructure

We provide comprehensive engineered solutions to industry for all Low Voltage, Medium Voltage and Drive Systems. Once an on-site audit is conducted, we will provide you with a customised engineered solution.

### LET US HELP YOU KEEP YOUR PRODUCTION RUNNING EFFICIENTLY AND EFFECTIVELY

#### We offer the following solutions:

- > Low Voltage and Medium Voltage Switchgear
- > Low Voltage and Medium Voltage Drive Systems
- > Power Quality Solutions
- > Metering Solutions
- > Switchboard Design and Manufacture
- > Load Shedding Solutions
- > Safety and Compliance with Regulation – Audits and remedial actions
- > Improved Energy Efficiency
- > Predictive Maintenance Equipment



**RELIABLE  
TECHNICAL  
ADVICE**



**ON SITE  
AUDITS**



**VALUE  
ENGINEERING**





## Fast, Skilled Support on Lighting Supplies

We stock a comprehensive range of world-class products at competitive prices. We are passionate about keeping Industry running efficiently.

**Let us supply you with all of your lighting needs:**

- > Highbays
- > Corrosion and Weather Proof
- > Explosion Proof
- > Battens
- > Panels and Luminaires
- > Downlights
- > Floodlights
- > Street and Amenity

**MARS**  
LED LIGHTING SYSTEMS

**PHILIPS**

**ROBUS®**

**TEC-MAR®**

 **TRILUX**  
SIMPLIFY YOUR LIGHT.

 **Appleton®**

**A.T.X.®**



# LIGHTING

## Guaranteed Lighting Solutions

We are a team of registered professionals (PR. Eng) who engineer value-packed lighting solutions. With an in-house laboratory for product testing and our team of experienced lighting engineers, we guarantee our designs.

### Our lighting solutions include:

- > Audit
- > Design
- > Installation
- > Ability to finance projects through savings (i.e no capex required)



**GUARANTEED  
PRODUCT  
LIFE EXPECTANCY**



**GUARANTEED  
ENERGY SAVING  
CALCULATIONS**



**RETURN OF  
INVESTMENT  
CALCULATIONS**



# WATER



## Quality, Site Specific Water Solutions

We are a team of highly experienced professionals that provide site-specific turnkey hot water solutions. We are passionate about providing quality water solutions to drastically reduce energy consumption and enhance reliability.

### We are experts in:

- > Water Reticulation and Storage Systems
- > Hot Water Systems (Heat Pumps)
- > Service Level Agreements and Heat Pump Servicing



**GUARANTEED LIFE  
EXPECTANCY**  
with maintenance  
agreements



**GUARANTEED  
ENERGY SAVING  
CALCULATIONS**



**RETURN OF  
INVESTMENT  
CALCULATIONS**

# SOLAR

## Specialised Solar Solutions

We guarantee system performance by designing specialised, bespoke solar solutions. Our projects are designed to enable system online monitoring; therefore we can guarantee results and measure performance. Rely on our renewable energy solutions to reduce your cost of energy and fix your electrical cost at today's rate, for the next 20 years.

### Our Solar offer includes:

- > Grid-Tied Solar Systems
- > Hybrid Solar Systems
- > Off-Grid Solar Systems



**GUARANTEED  
ENERGY SAVING  
CALCULATIONS**



**GUARANTEED  
LIFE EXPECTANCY**

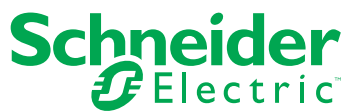


**SERVICE  
LEVEL AGREEMENT**

# BRANDS

We are partnered with a number of top Suppliers, both locally and internationally.

We pride ourselves on our comprehensive range of quality branded products that are carefully selected in terms of compatibility, standardization, reliability and safety.



# CUSTOMERS

Our team of committed and motivated individuals work passionately to ensure that our customer's facilities keep running efficiently and effectively.

RAINBOW







# WORDS FROM MD

**Brian Howarth is the patriarch and leader of Magnet. Following in his parent's footsteps, Ernest and Janice Howarth, Brian has paved a new path for Magnet, shaping the business into the company we know today.**

Being a family-owned business, the principles of honesty, transparency and strong ethics are deeply etched into our DNA. And even deeper engrained is Magnet's commitment to exceptional customer service.

"Since its inception over 46 years ago, Magnet has always placed our customers at the heart of everything we do. Our customers have shown incredible loyalty and supported us over the last 4 decades. This loyalty is built on reliability and trust - when you call Magnet, you know you will get around-the-clock support, quick service and the best technical advice around. Our people are the key to our success. We ensure our staff are at the leading edge of technology and service, through consistent training and development.

We have a passion for keeping industry running efficiently. We don't just want to sell you a product, we want to add value to your facility! How do we do it better than anyone else? We put in the time and energy to really understand you, your plant, your challenges and what you are trying to achieve. We utilise our strong partnerships, with over 50 market-leading brands in the electrical and lighting world, to offer you the most cost-effective and energy-efficient solutions.


With experts in Electrical, Lighting, Water and Solar we have the skills, brands and experience to provide you with support and service - second to none! Let us show you what real service looks like."

## **BRIAN HOWARTH**

Managing Director  
Magnet Group

# BEE CERTIFICATION

Magnet is a proud Level Four B-BBEE Contributor, despite it being incredibly difficult in recent times to achieve a similar rating. With this, we continue to financially support the education and empowerment of our employees and their children. Furthermore, we actively strive to improve the conditions of our local community by embarking on annual charity initiatives and outreach programmes.



**BROAD BASED BLACK ECONOMIC EMPOWERMENT CERTIFICATE**

## MAGNET ELECTRICAL SUPPLIES (PTY) LTD

Address: Unit 5, Edstan Business Park, 2 Ibhubesi Rd, Riverhorse Valley, 4017  
Registration No. 1969/016248/07 | VAT Registration No. 4580108233

<b>BEE Contributor Level:</b> (2019 BBEE DTI (Revised Codes) Scorecard) Gazette Number 42496	<b>LEVEL 4</b> (82.07 Points)	
<b>BEE Procurement Recognition Level:</b>	100%	
<b>Enterprise Category:</b>	Generic Scorecard	
<b>Reference Number:</b>	IC7386-130720	Rev 0

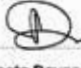
Element	Element Weighting	Score
Ownership	25	14.97
Management Control	19	9.78
Skills Development	20	16.80
Enterprise & Supplier Development	42	35.53
Socio-economic Development	5	5.00
<b>Total</b>	<b>111</b>	<b>82.07</b>


Measurement Period	February 2020
Modified Flow Through Principle applied:	NO
Continued Black Recognition Applied	YES
≥ 51% Black ownership:	NO
Black Ownership %	14.01%
≥ 30% Black women ownership:	NO
Black women ownership %	13.00%
Designated Group supplier:	NO
Designated Group %:	0.00%
Discount Principle Applied	NO
Empowering supplier:	YES

**Certificate Date:** 13 July 2020

**Expiry Date:** 12 July 2021

**Authorised By:**   
Neeta Devnarain

Xcelerate Verification Agency (Pty) Ltd Reg 2016/254904/07  
The Liberty Life Building, 21 Aurora Drive, Umhlanga Ridge  
PO Box 933, Hyper by the Sea, 4063 | Tel 081 505 555 Fax 090 481 7118  
info@xcelerate.co.za | www.xcelerate.co.za



DRIVING BUSINESS GROWTH THROUGH EXCELLENCE



## CONTACT US

### **Durban (Head Office)**

Unit 5 Edstan Business Park,  
2 Ibhubesi Road, Riverhorse Valley,  
Durban, South Africa

Tel: +27(0)31 274 1050

Cell: +27(0)73 539 7060

### **Pietermaritzburg**

186 Victoria Road, Pietermaritzburg  
South Africa

Tel: +27(0)33 355 5700

Cell: +27(0)82 495 4194

### **Richards Bay**

Shop 2, 39 Dollar Drive, Richards Bay,  
South Africa

Tel: +27(0)35 901 1100

Cell: +27(0)82 950 3743

### **Johannesburg**

Aero Star Park, 219 Jet Park Road  
Witfield, Boksburg, South Africa

Tel: +27(0)11 397 7936

Cell: +27(0)83 871 4853